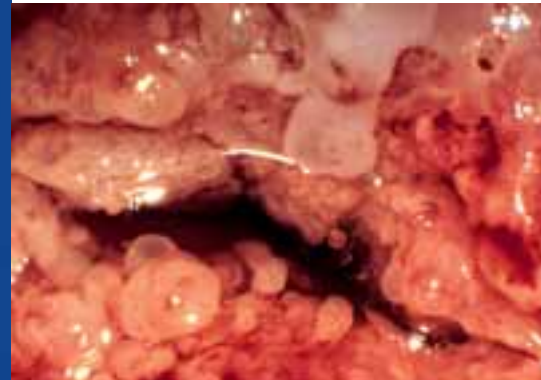


Diagnosis and Documentation: Colposcope 150 FC



We make it visible.

Optical Brilliance with the Colposcope 150 FC from Carl Zeiss.

The microscopic world becomes visible

- High-quality optics permit recognition of even the finest details.
- 5 magnification steps to display overviews and details.

Targeted light

- The high-intensity cold light, fiber optic illumination is controlled via the integrated light guide.
- The swing-in green filter enhances contrast and permits assessment of the even finest vascular networks.

Convenient and reliable examinations

- The central handgrip with integrated fine focus facility allows convenient single-hand operation of the Colposcope 150 FC.
- The large swivel area of the microscope and the swivel arm permit safe and reliable positioning of the Colposcope 150 FC.
- Via the relevant objective lens, you select the ideal working distance and your personal viewing tube for optimum operating convenience.
- The wide-field optics provide an excellent overview and the largest possible field of view.

Accessories for even more versatility

- Co-observation tube via the beam splitter.
- Attachment of a digital still camera.
- Dovetail for the attachment of a CO₂ laser.

Adaptation to room conditions

- The 0.65 m floor stand allows easy movement from one examination room to another.
- Mounting on the examination chair (mounts to be attached by the chair manufacturer) – a particularly space-saving configuration.



Documentation and information

- The integrated MediLive® Primo 1CCD video camera (option) permits the documentation of significant findings.
- The live image helps provide the detailed information patients expect.

Features

Magnification factor	0.4	0.6	1.0	1.6	2.5
Magnification	2.9x	4.3x	7.1x	11.4x	17.9x
Field diameter in mm	77	51	31	19	12

With objective lens $f = 300$ mm (corresponds to the approximate working distance), the eyepiece magnification is 12.5x
Alternative: objective lens $f = 250$ mm

- 12 V 100 W fibre optic illumination, adjustable
- Fine focusing: 18 mm
- Inclined or straight tube
- Wide-field optics
- Video camera: 1CCD, 1/2", Y/C (S-Video), VBS (composite), 752 (H) x 582 (V) PAL, 768 (H) x 494 (V) NTSC, S/N ratio 50 dB, horizontal resolution 480 lines

Compliance:

- DIN EN ISO 9001
- DIN EN ISO 13485
- DIN EN 60601-1



Carl Zeiss Surgical GmbH

73446 Oberkochen
Germany
Fax: +49 (0) 7364/20-4823
Email: surgical@zeiss.de
www.zeiss.com/colposcopy
www.zeiss.com/contacts

MediLive is a registered trademark of Carl Zeiss.