

**Perfect colposcope.  
Perfect diagnosis.**



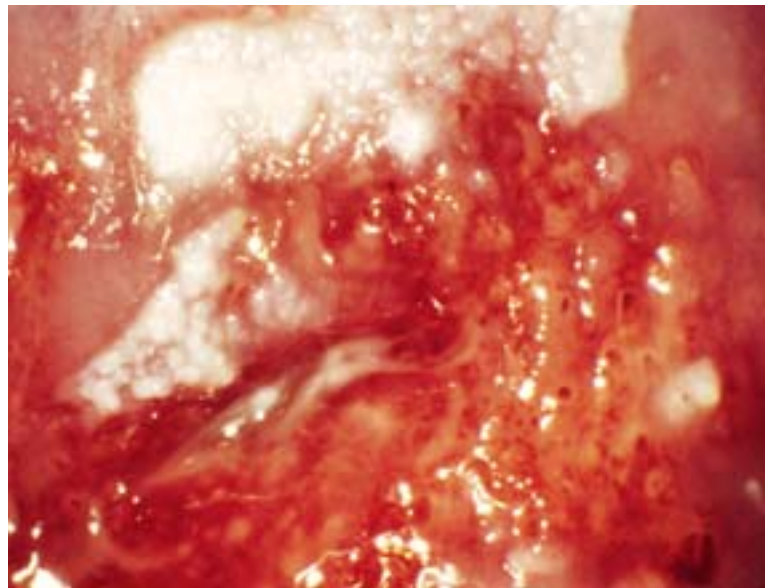
We make it visible.

# Even more reliability for your patients: Early detection with the ZEISS Colpos

"Both skill **and** perfect optics are needed to recognize precancerous changes."

Carl Zeiss has been developing and producing world-class optical systems for over 150 years now. We at Carl Zeiss make the world visible when the naked eye is not enough. That is our vision.

The colposcope is often the starting point for successful diagnosis and therapy: it allows you to recognize tissue abnormalities in the entire genital area at an early stage.



*Colposcopy: Rough leukoplakia of the anterior lip, vulnerable, vascular transformation zone on the posterior lip*

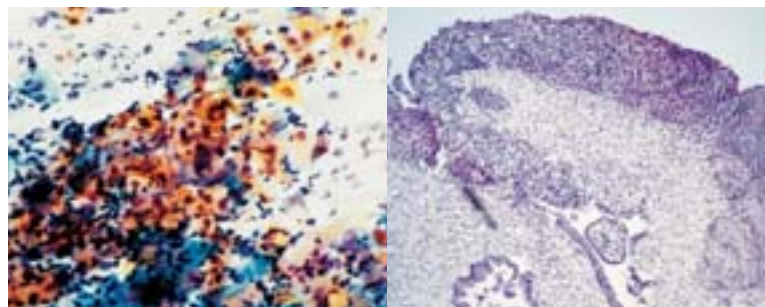
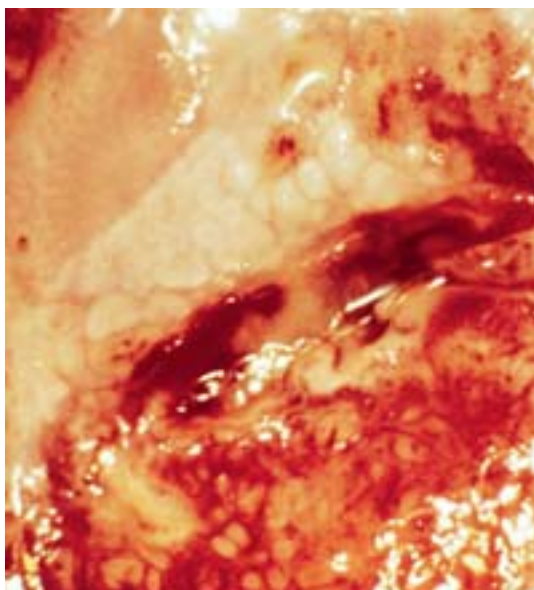


*Central polypoid ectopia*



*Abnormal portio with mosaic and punctuation*

*Application photos:  
Dr. Peter Schomann,  
Lüneburg, Germany*



*Cytology: Signs of keratinization with dyskeratosis of all layers. Suspected CIN III, Pap IVA*

*Histology: CIN III*

*After the application of acetic acid: aceto-white, hollow-like mosaic on the anterior lip; vulnerable, vascular transformation zone on the posterior lip*

# cope

## **Why you should choose a colposcope from Carl Zeiss**

### **Optical brilliance**

facilitates the assessment of even the finest changes in the epithelium and hence also differential diagnosis

### **Optimum illumination**

allows you to recognize even the smallest color differences in the epithelium and the finest tissue patterns

### **Swing-in red-free filter**

enhances the contrast of the colposcope image

### **Different magnification settings**

for a general overview at a low power and the clear recognition of detail at high powers, providing you with additional information and hence greater reliability

### **Straight, inclined or tiltable tube**

guarantees ergonomically correct viewing conditions

### **Large focusing, inclination and tilt ranges**

in addition to the variable height adjustment of the suspension arm and an ergonomically correct handgrip allow fast, reliable positioning of the colposcope

### **Selectable working distance**

with objective lenses featuring different focal lengths

### **Perfect documentation and patient education**

with an optionally available video camera or a digital camera

### **Attachment to examination chair or floor stand**

for optimum integration on the examination chair and maximum mobility



## It's the details that count: Colposcope E

Colposcope E offers outstanding features for use in routine colposcopy:

- Attractive price
- Superb ease of use and flexibility
- High optical quality



Various configurations allow the Colposcope E to be optimally adapted to the requirements of your office:

- Attachable to suspension mount/examination chair or floor stand
- With straight or inclined tube
- With fixed magnification or with 3-step changer
- MediLive™ Primo 1CCD video camera (option) for documentation of findings and patient education

### Performance features of Colposcope E

Illumination	6 V/15 W halogen illumination
Working distance	300 mm
Magnification	5x or 3x - 5x - 8x with 3-step changer
Viewing tube	Straight or inclined tube
Red-free filter	Swing-in
Suspension system	Suspension mount (connecting tube for examination chair), rollable floor stand
Lifting range	Suspension mount +/- 260 mm
Video camera	1CCD, Y/C (S-Video), VBS (Composite), PAL or NTSC



## Optical brilliance: Colposcope 150 FC

The Colposcope 150 FC meets the critical demands you make on a top-class colposcope intended for all-round use:

- High-intensity fiber optic illumination, via integrated light guide
- Convenient, single-hand operation using the ergonomically arranged controls
- Large fine focusing range
- 5-step magnification changer
- Widefield optics for the largest possible field of view



## For routine and much more: Colposcope pico

- High-intensity fiber optic illumination
- Ergonomically correct arrangement of the controls
- Objective lens with fine focusing
- 5-step magnification changer
- Widefield optics for the largest possible field of view
- Very mobile floor stand with four easy-to-move, lockable casters
- Suitable as an SAD (Sexual Assault Documentation) package



### Performance features of Colposcope 150 FC

Illumination	12 V/100 W cold light, fiber optic illumination, adjustable
Working distance	250 mm, 300 mm
Magnification	3.5x - 21.5x (at working distance 250 mm, 12.5x eyepieces)
Fine focusing	18 mm
Viewing tube	Straight, inclined, 180° tiltable tube
Red-free filter	Swing-in
Suspension system	Suspension mount (connecting tube for examination chair), rollable floor stand
Lifting range	+/- 230 mm
Video camera	Optionally integrated, 1CCD, Y/C (S-Video), VBS (Composite), PAL or NTSC





Colposcope pico is available in various configurations:

- With straight, inclined or tiltable tube for maximum convenience and comfort
- With optionally integrated MediLive™ 1CCD video camera for perfect documentation of findings and patient education

#### **Performance features of Colposcope pico**

Illumination	12 V/100 W cold light, fiber optic illumination, adjustable
Working distance	250 mm, 300 mm
Magnification	3.5x - 21.5x (at working distance 250 mm, 12.5x eyepieces)
Fine focusing	12 mm via focusing objective lens
Viewing tube	Straight, inclined, 180° tiltable tube
Red-free filter	Swing-in
Suspension system	Rollable floor stand
Lifting range	+/- 300 mm
Video camera	Optionally integrated, 1CCD, Y/C (S-Video), VBS (Composite), PAL or NTSC



You yourself choose the system combination best suited for your requirements:

- Attachable to suspension mount/examination chair or floor stand
- With straight, inclined or tiltable tube for maximum convenience and comfort
- With optionally integrated MediLive™ Primo 1CCD video camera for perfect documentation of findings and patient education



## **Outstanding accessories: Extend the capabilities of your colposcope**

### **Perfect video documentation**

The optionally integrated video camera allows you to optimally document important findings. The live image on the monitor facilitates patient education.

### **Digital photography**

As an alternative to video documentation, digital photography is also ideal for the fast documentation of findings.

### **Image documentation**

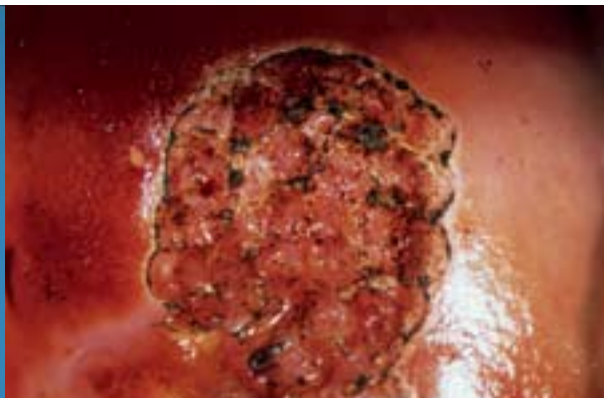
You can use the MediLive™ ImageBox digital recording device to store individual images from video sequences directly from the video camera of the colposcope and then burn them onto a CD-R.

### **Chair attachment**

Using an appropriate mount, the Colposcope E and the Colposcope 150 FC can be attached to examination chairs from different manufacturers. Mounts for attaching connecting tubes to examination chairs are available from the respective chair manufacturer.

### **Laser attachment**

CO<sub>2</sub> laser therapy can be performed with the Colposcope 150 FC. The micromanipulator can be directly attached to the colposcope for this purpose.



*Condition directly  
after laser therapy,  
anterior lip*

## Make the examination complete: Light microscopes from Carl Zeiss

Measures for the early diagnosis of abnormalities of the Cervix uteri are ideally rounded off by cytological findings. The native smear is also an integral part of the patient examination: it allows fast diagnosis and hence therapy of inflammatory processes.

Light microscopes from Carl Zeiss offer outstanding benefits for use in gynecology:

- Perfect optics
- Superb ease of use and flexibility
- Upgradeable for advanced fluorescence techniques





**Compliance**

- DIN EN ISO 9001
- DIN EN ISO 13485
- DIN EN 60601-1
- UL 60601-1
- CAN/CSA C22.2 No. 601.1



For advice, please contact:



**Carl Zeiss Surgical GmbH**

73446 Oberkochen  
Germany  
Fax: +49 (0) 7364/20-4823  
Email: [surgical@zeiss.de](mailto:surgical@zeiss.de)  
[www.zeiss.com/colposcopy](http://www.zeiss.com/colposcopy)  
[www.zeiss.com/contacts](http://www.zeiss.com/contacts)